



For Enquiry :  
**+91 99099 74406, 78618 94689**  
shivsadhna@buildcon@gmail.com

REG. RERA NO. PR/GJ/AHMEDABAD/AHMEDABAD CITY/AUDA/MAA08448/110521  
Rera Website : [www.gujrera.gujarat.gov.in](http://www.gujrera.gujarat.gov.in)



# SKYWALK

## MANGLAAM

3 BHK LIVING & SHOPS



**SKYWALK**  
MANGLAAM

A Home in the  
*Clouds*







Luxury You

## *Truly Deserve*

Introducing you to a life you've aspired for, and world-class designs you've always yearned for. You've lived your version of a lavish life; now experience the real deal... at 'Skywalk Manglaam'.

With an edge over the rest, and centrally located in the heart of Ahmedabad, Skywalk is Model Colony's luxury

landmark in the making. This premium project by SHIVSADHNA BUILDCON is adorned with every necessary convenience of the city life. Tastefully stylish and luxurious 3 BHK apartments, with distinctive specifications, convenient roadways, proximity of institutions and entertainment hubs, lush green corners, and an exhaustive list of amenities, Skywalk is your royalty realised.







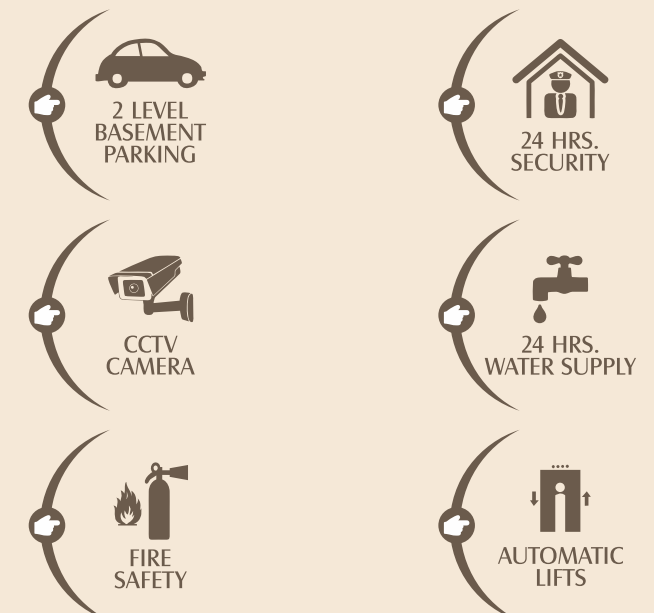


# Create Homes

Where families can rediscover the joy of togetherness  
and spending precious time with each other



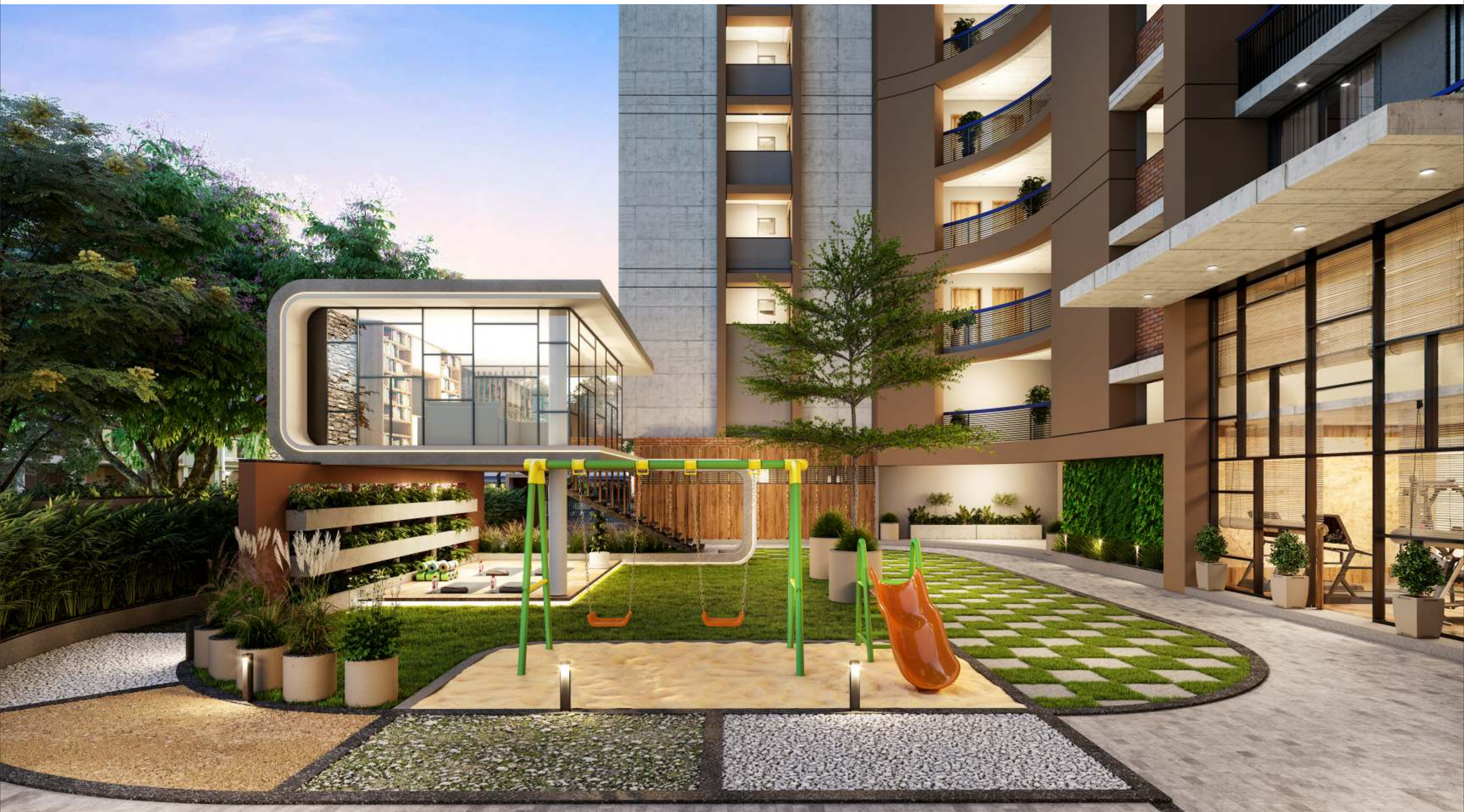
## LAYOUT PLAN - GROUND FLOOR



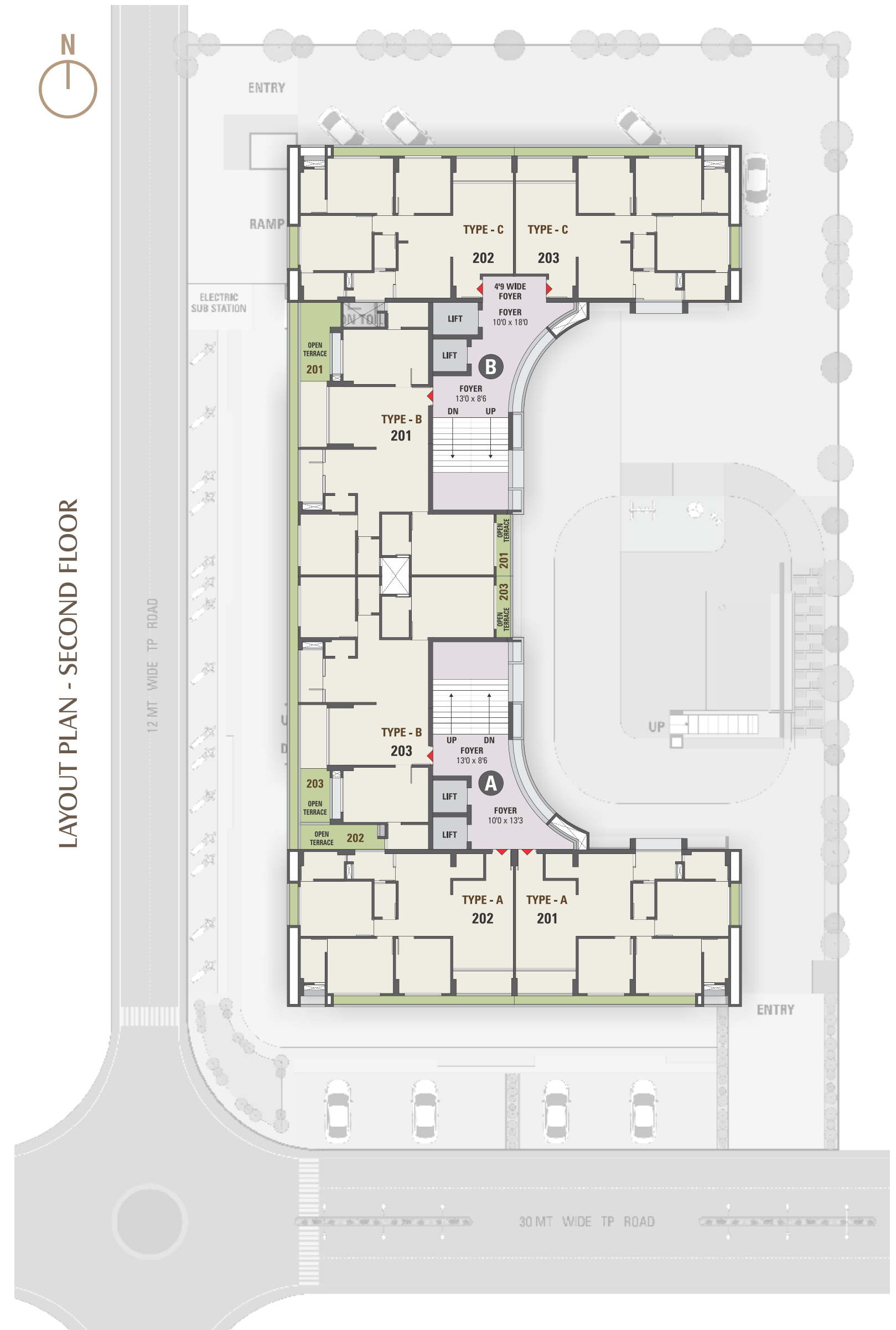
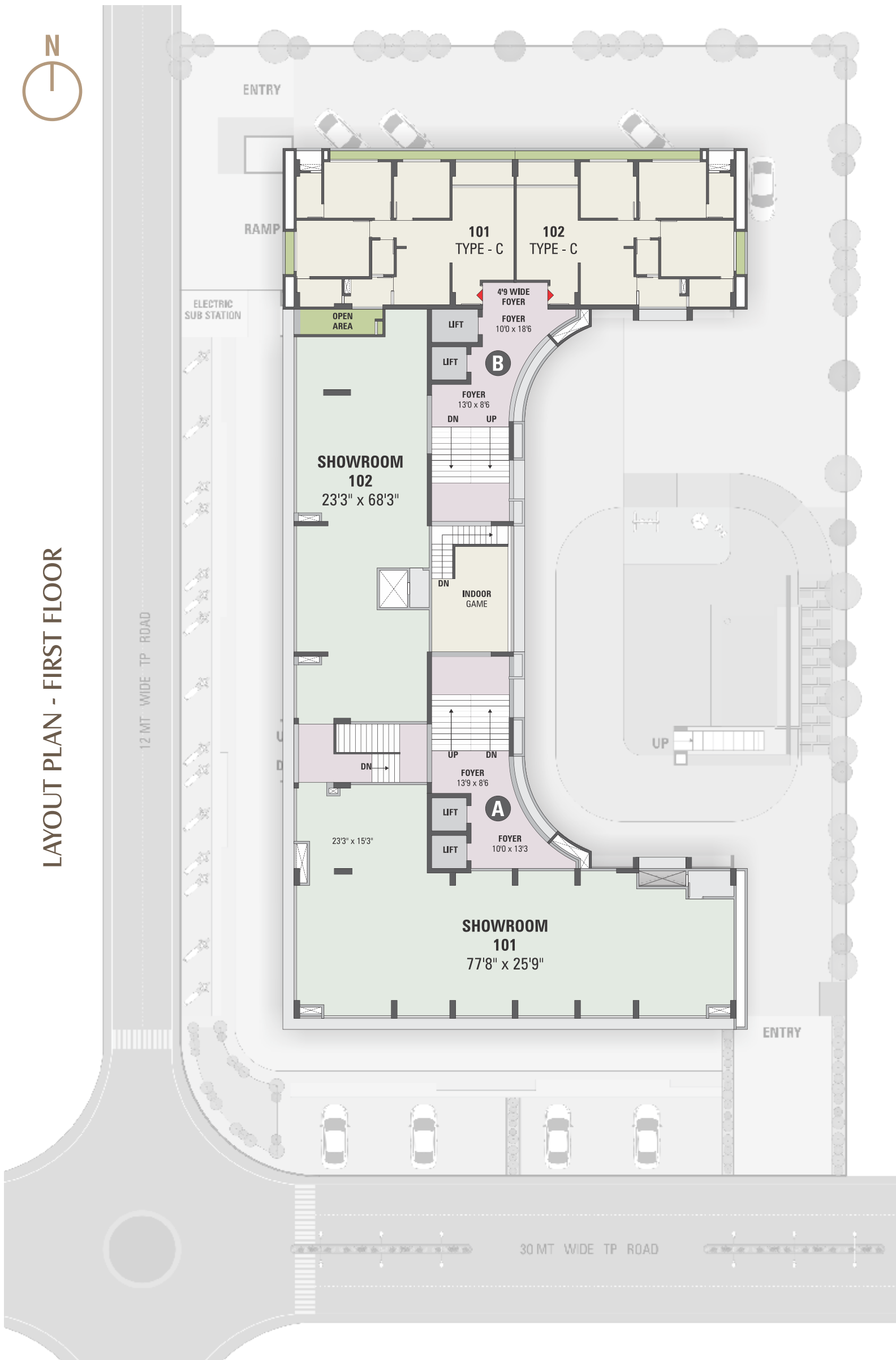


Space So Rare.  
*Surroundings*  
So Serene. Moments So Unique.

At SKYWALK MANGALAAM your world is so different that you will relive every moments. Each unit is a marvel and every marvel is precisely planned and inter worked with chic interior and classy amenities. Landscaped with substantial spaces each of the abode here, is simply beyond belief. Come and rediscover life at SKYWALK MANGALAAM.

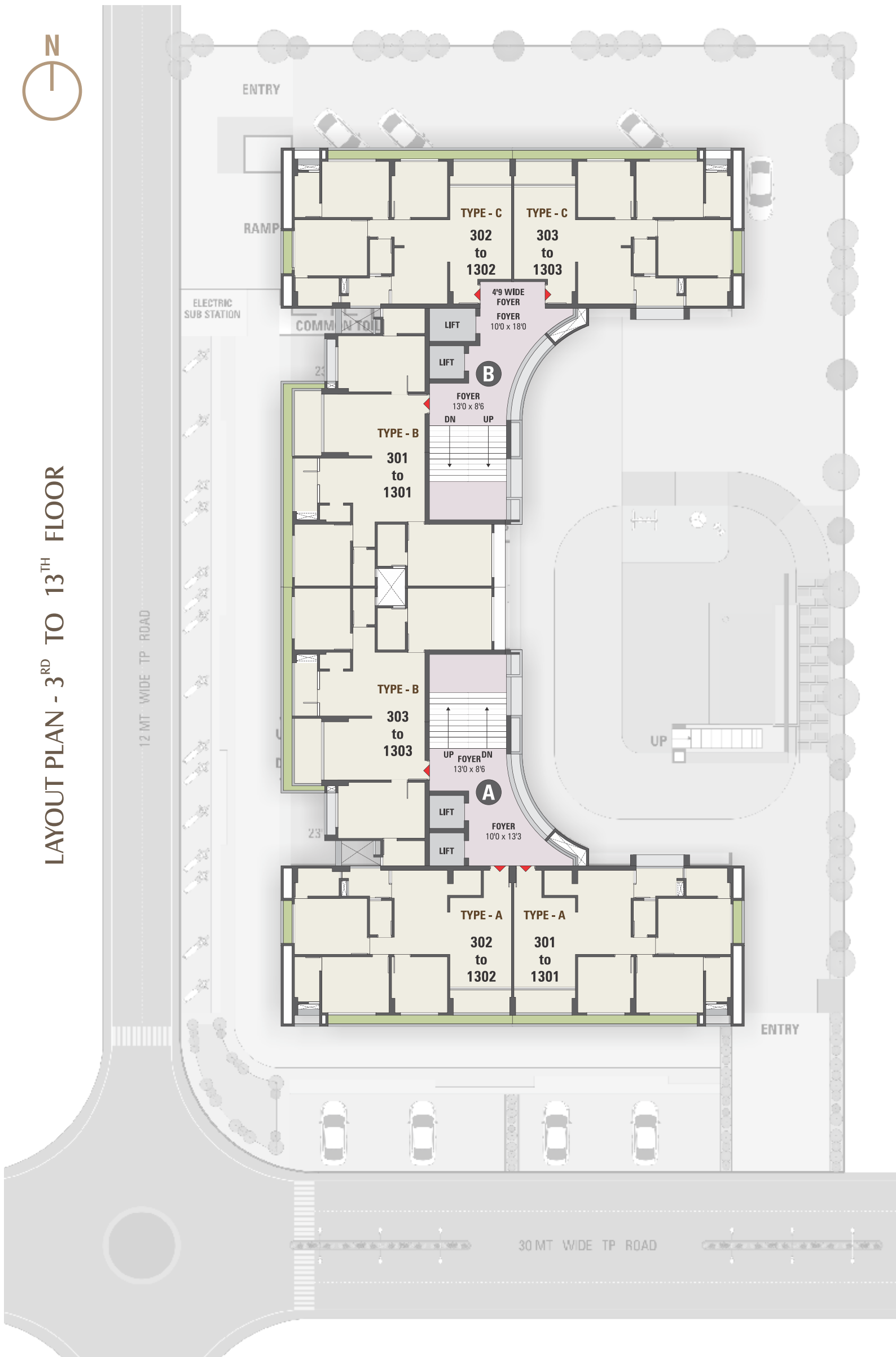




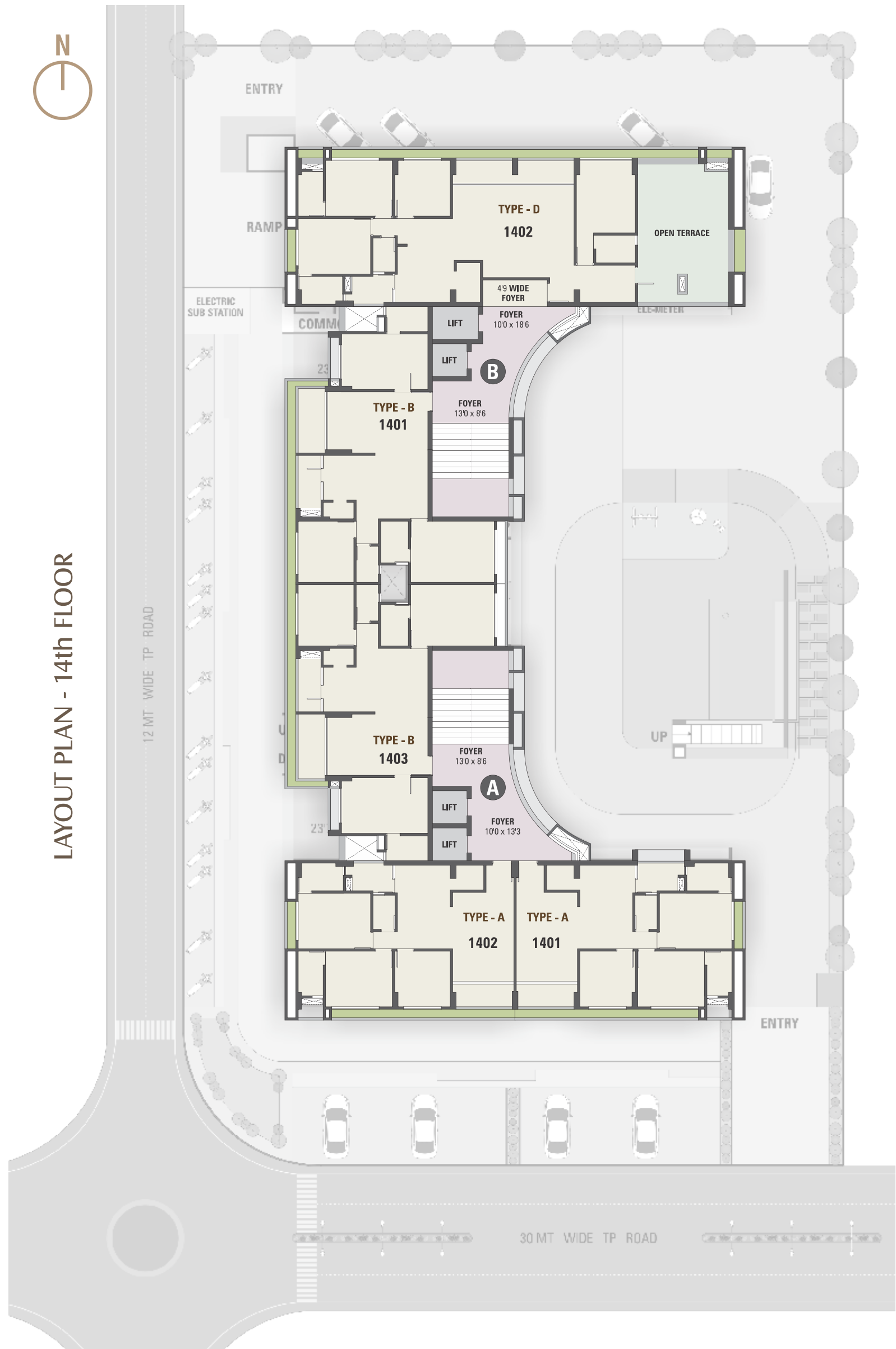




LAYOUT PLAN - 3<sup>RD</sup> TO 13<sup>TH</sup> FLOOR

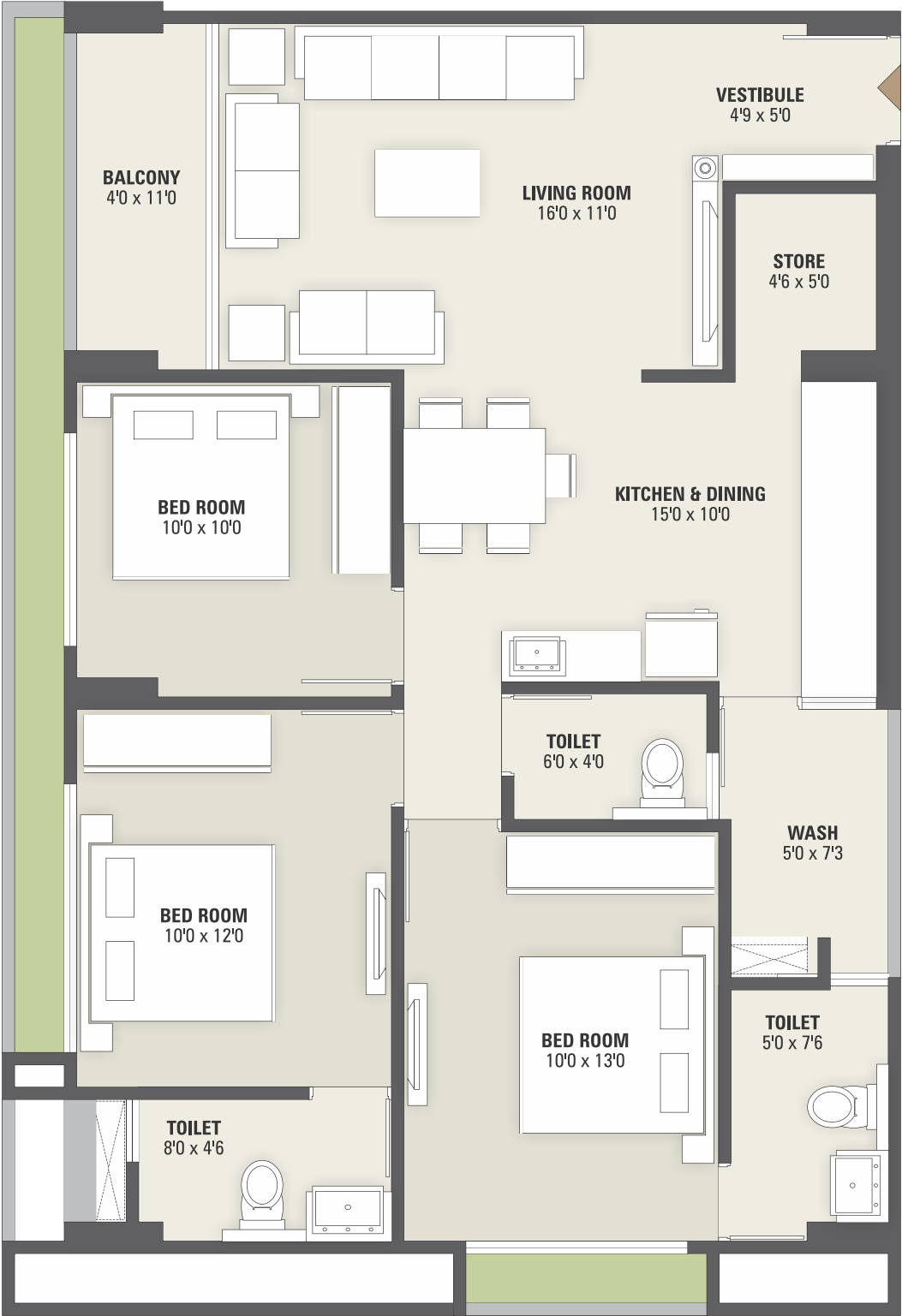
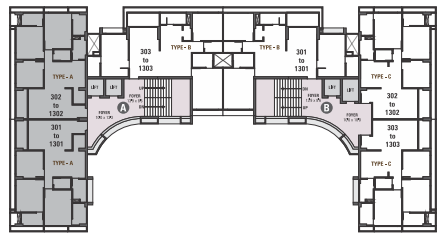


LAYOUT PLAN - 14th FLOOR

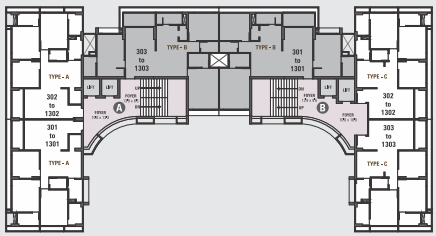




UNIT PLAN TYPE A  
3 BHK

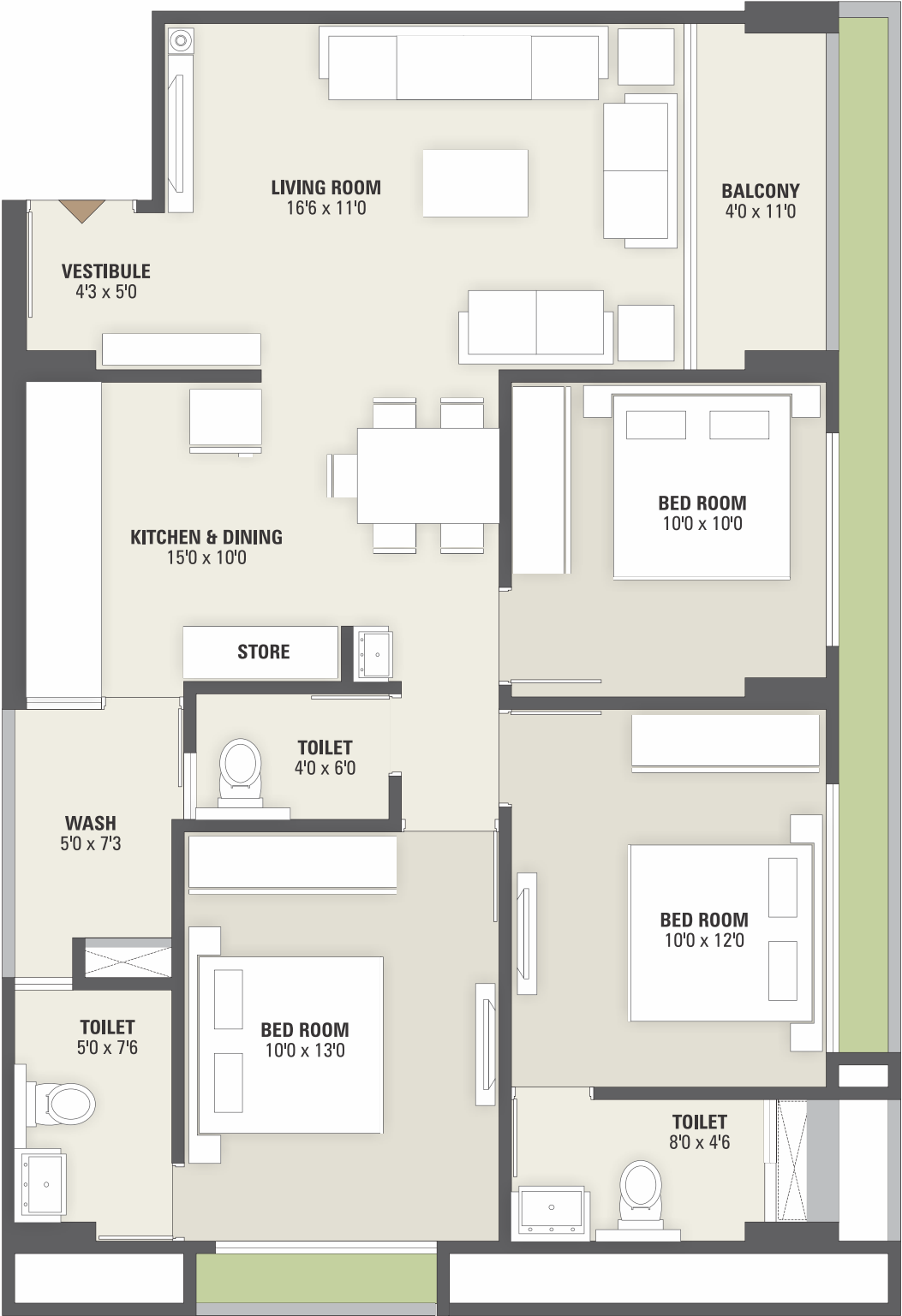
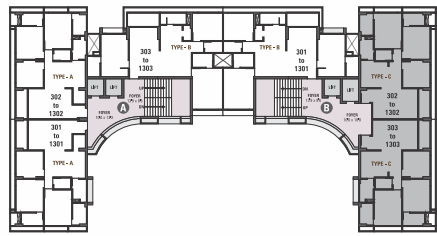


UNIT PLAN TYPE B  
3 BHK

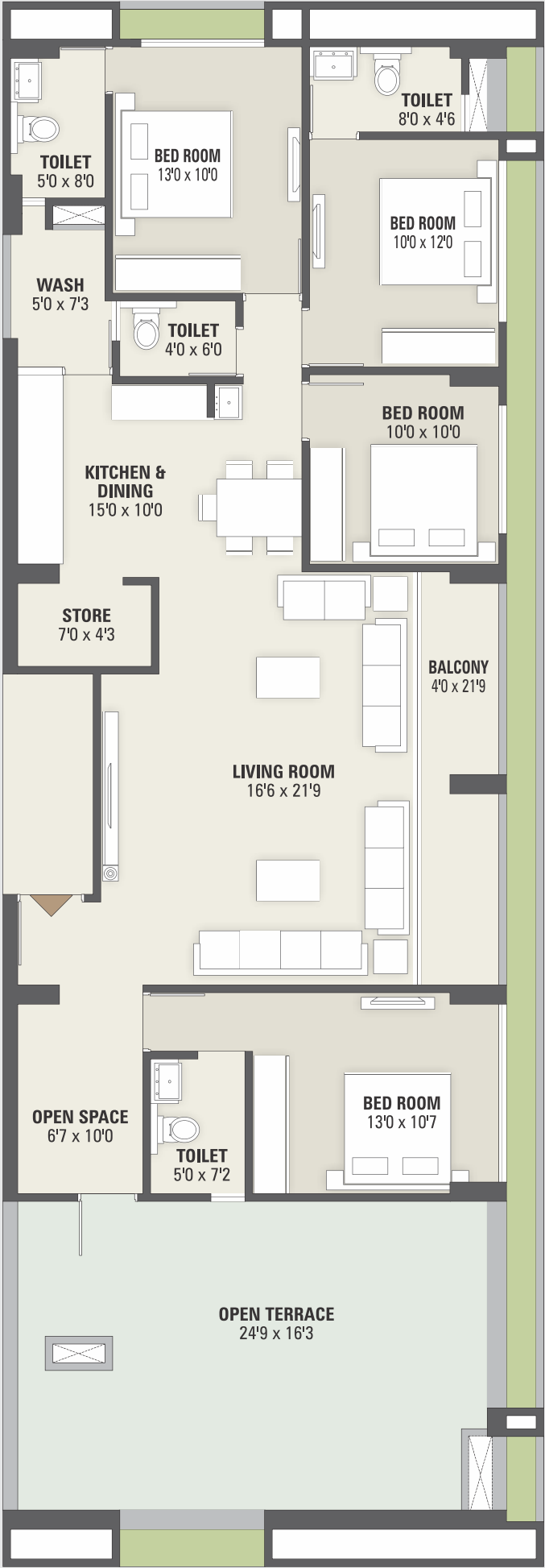




UNIT PLAN TYPE C  
3 BHK



UNIT PLAN TYPE D  
4 BHK





Spacious & Well

# *Ventilated*

Apartments have been designed in a manner where you can combine togetherness of your family with personal independence







A life designed around your

# *Desires*

A beautiful world of your own where there is something special for your loved ones and where they always have things to do and place to go.

**SKYWALK**  
MANGLAAM



# Specification



**FLOORING**  
Branded Vitrified tiles for entire flooring in all apartments.



**WALL FINISH / ELEVATION**  
Internal mala plaster with white finish putty.  
Attractive external elevation with double coat sand faced plaster with 100% acrylic paints.



**DOORS & WINDOWS**  
Decorative main door & other flush doors with wooden frame.  
All windows in aluminum section with granite frame.



**KITCHEN**  
Mirror polished granite (black) platform with S.S. sink, designer glazed tiles up to lintel level.



**ELECTRIFICATION**  
Branded ISI modular switches with concealed wiring and adequate number of points.  
MCB distribution panel.



**PLUMBING**  
ISI CPVC and UPVC pipes for water supply, PVC & SWR pipes for solid waste and drainage systems.  
Percolation recharge wells as per the norms. Branded CP fittings.



**TOILET**  
Branded Designer tiles on floor and walls up to lintel level.  
Branded sanitary & bath fittings.



**TERRACE**  
Brick-bat concrete with china mosaic for heat reflection and thermal insulation.



**LIFT**  
2 premium quality lifts in each block.

## NOTES:

- This brochure is not as legal part of document but only for easy understanding to customer
- Subject to Ahmedabad Jurisdiction
- Payments in favour of "SHIV SADHNA BUILDCON"



Site Address :  
Nr. Sangath Pure, DCIS BRTS Bus Stop,  
Chandkheda, Ahmedabad - 382424.

SCAN FOR LOCATION



**SKYWALK**  
MANGLAAM

## EVERYTHING WITHIN 0 TO 11 MINUTES FROM

 METRO ROUTES	 INTERNATIONAL AIRPORT	 MOTERA INTER. STADIUM	 APOLLO HOSPITAL	 BULLET TRAIN ROUTES	 BRTS ROUTES	 AHMEDABAD RIVERFRONT
 SHOPPING MALLS	 S. G. HIGHWAY	 PVR MULTIPLEX	 SABARMATI RAILWAY STATION	 H B KAPADIA PODAR INT. SCHOOL DCIS SCHOOL	 S. P. RING ROAD	 ENGINEERING COLLEGE